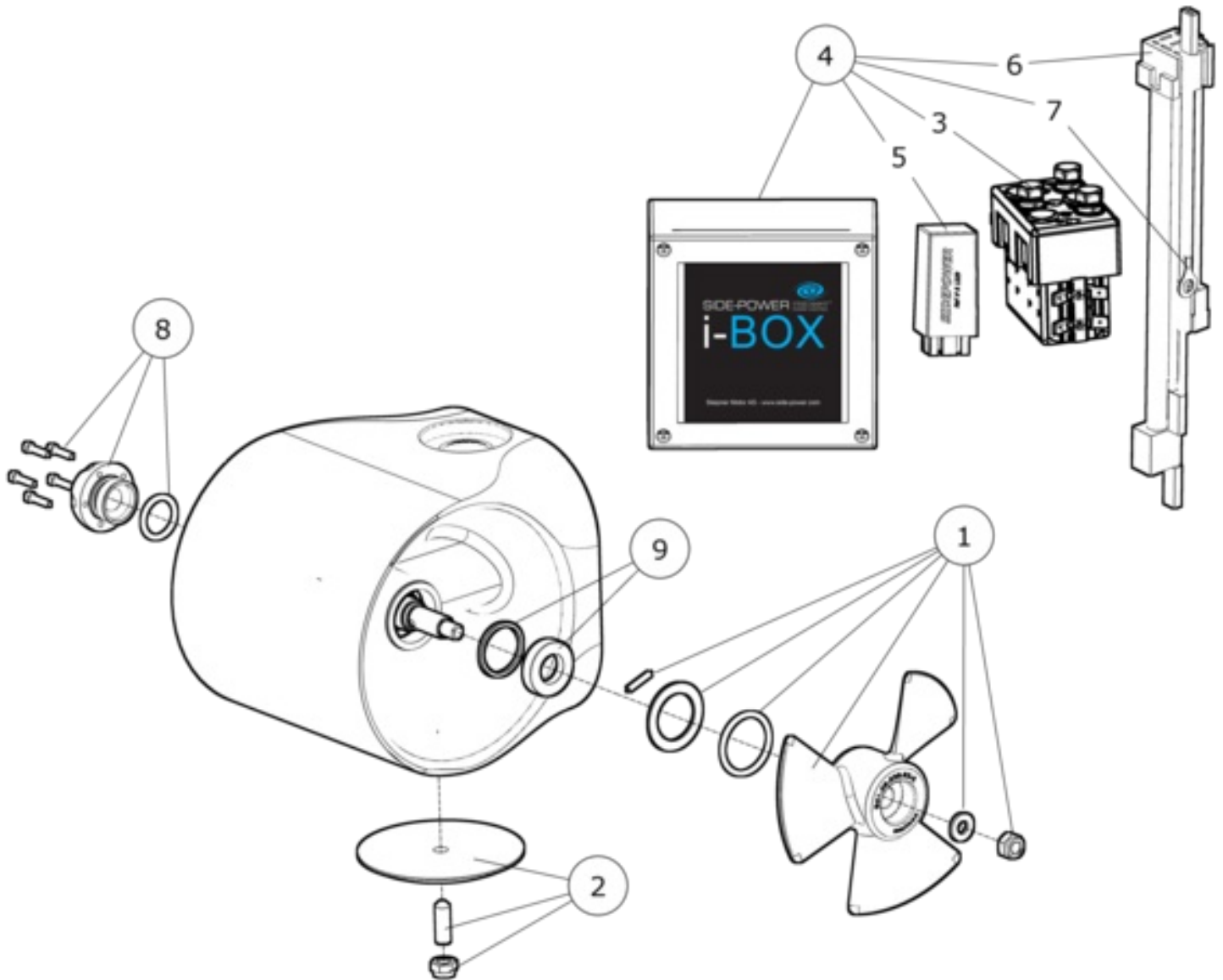


# EX180D - EX180 Dual external Pod thruster 24V



Spare parts (valid from 2017-11-27)



<b>#</b>	<b>Description</b>	<b>Product</b>
1	Propeller kit	50321 - Thruster propeller kit EX series
2	Anode kit	4 1190 - Anode zinc Exturn KIT
3	Solenoid kit	41571125 - Solenoid for i-Box
4	iBox	102250-24V - Solenoid for i-Box
5	Electronic Control box	6 1232 I - IPC relay 12/24V
6	EX cable	6 1850 - Kabel Exturn
7	IPC interface cable	102252 - IPC- interface Exturn
8	End cap kit	137309 - Exturn end cap kitt
9	Seal kit EX	137318 - Seal kit Ex series

The installer alone has responsibility for the installation of the spare parts. Side-Power only warranty the spare parts supplied only.

The information given in the document was correct at the time it was published. However, Sleipner Motor AS can not accept liability for any inaccuracies or omissions it may contain. Continuous product improvement may change the product specifications without notice. Therefore, Sleipner Motor AS can not accept liability for any possible differences between product and document.