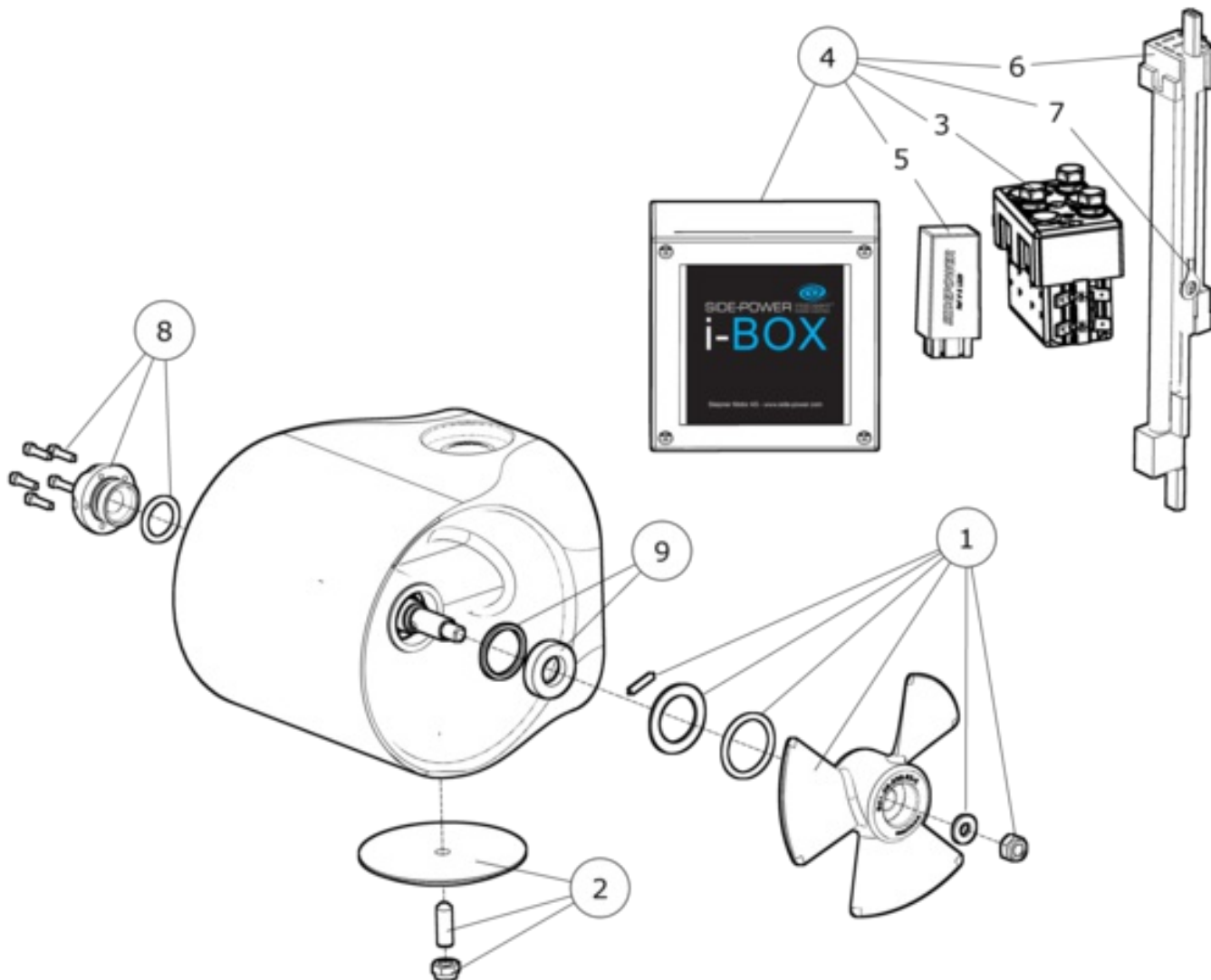


EX95S - EX95 Singel 24V thruster



Spare parts (valid from 2017-11-27)



#	Description	Product
1	Propeller kit	50321 - Propeller kit EX series
2	Anode kit	4 1190 - Anode Zinc Exturn KIT
3	Solenoid kit	41571125 - Rele kit EX -24v
4	iBox	102250-24V - Relay I-box 24v
5	Electronic Control box	6 1232 I - Delay relay 12/24V
6	EX cable	6 1850 - Kabel Exturn
7	IPC interface cable	102252 - IPC- interface Exturn
8	End cap kit	137309 - Exturn end cap kitt
9	Seal kit EX	137318 - Seal kit Exturn

The installer alone has responsibility for the installation of the spare parts. Side-Power only warranty the spare parts supplied only.

The information given in the document was correct at the time it was published. However, Sleipner Motor AS can not accept liability for any inaccuracies or omissions it may contain. Continuous product improvement may change the product specifications without notice. Therefore, Sleipner Motor AS can not accept liability for any possible differences between product and document.